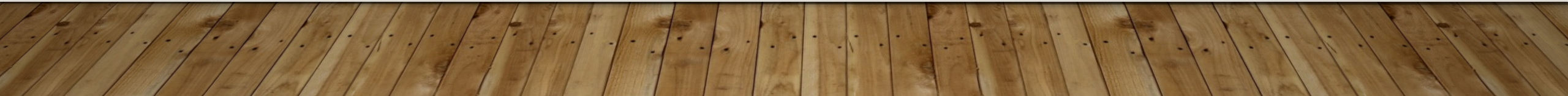
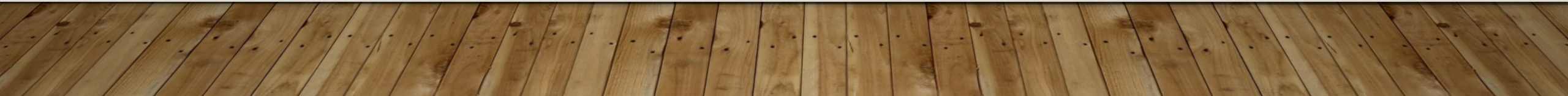
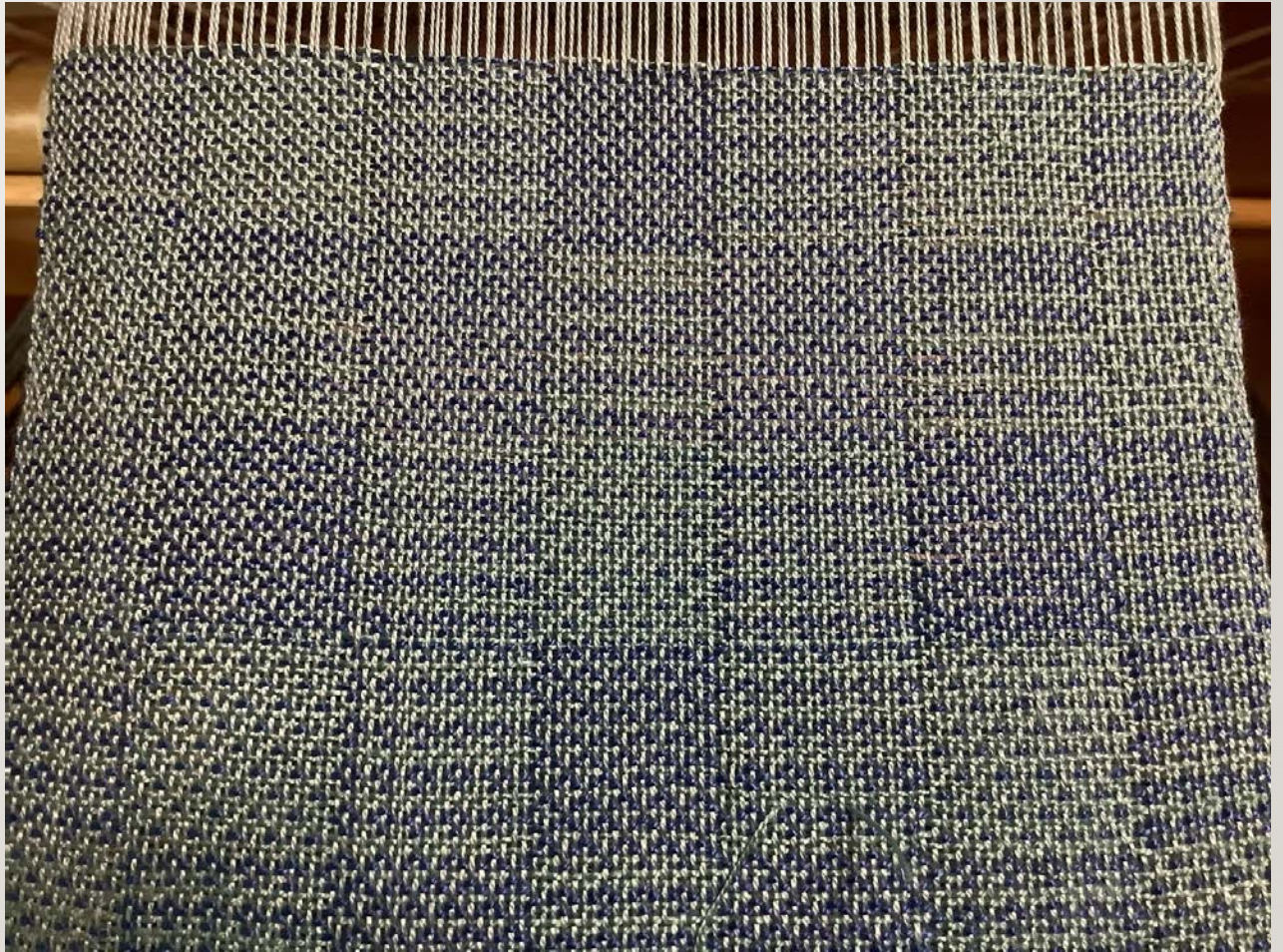


WEAVING YEAR OF WONDER – TREADLING

NOVEMBER 15, 2021



SWIVEL SAMPLE
PATTERN FROM HELENE BRESS
THE WEAVING BOOK, P. 98
10/2 COTTON WARP & WEFT
20 EPI
TRUDI JACOBSON



WAFFLE WEAVE DISH TOWELS ON 4 SHAFTS
PATTERN FROM HANDWEAVING.NET 45443
8/2 UNMERCERIZED COTTON
16 EPI
JEANNE MARIE PEET



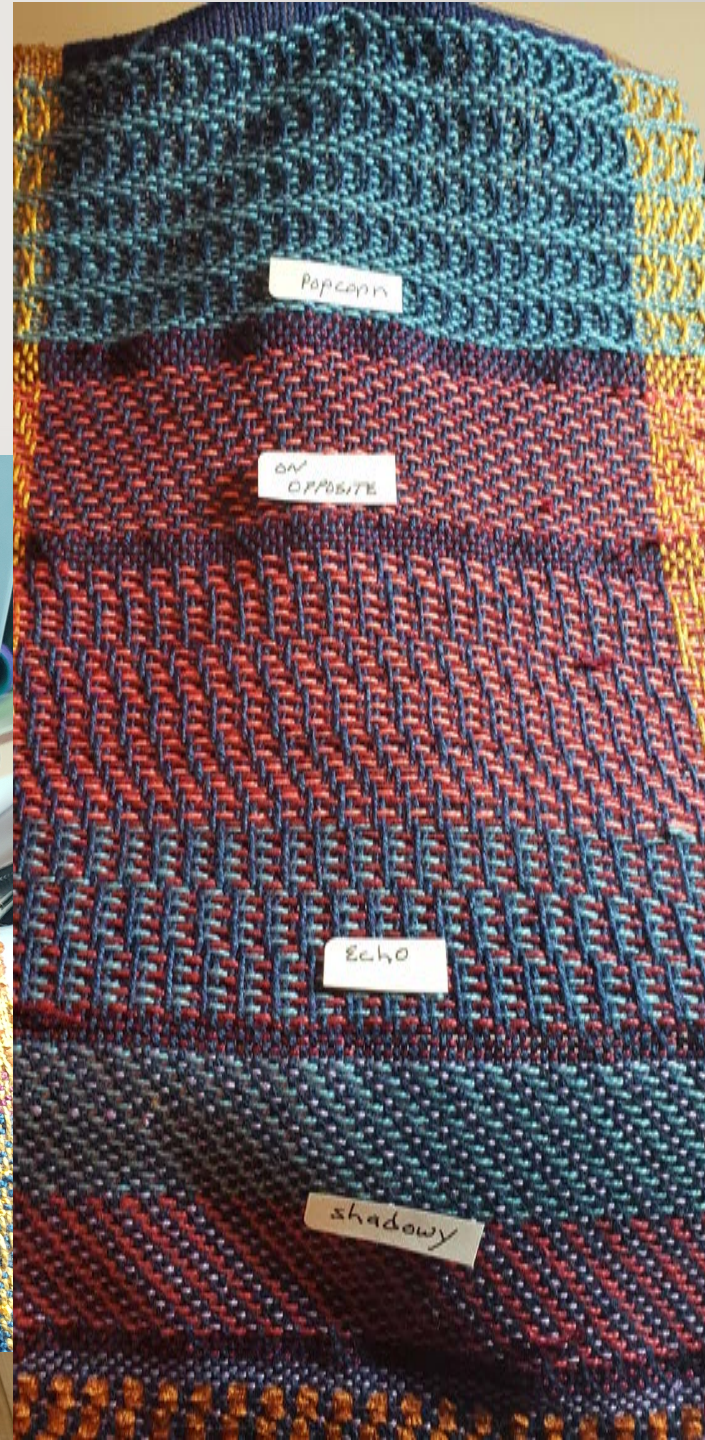
TREADLING VARIATIONS
STRUCTO LOOM
SWIVEL – RISING & SINKING SHEDS
SPOT BRONSON
8/4 COTTON RUG WARP
15 EPI
SUSAN MAYO



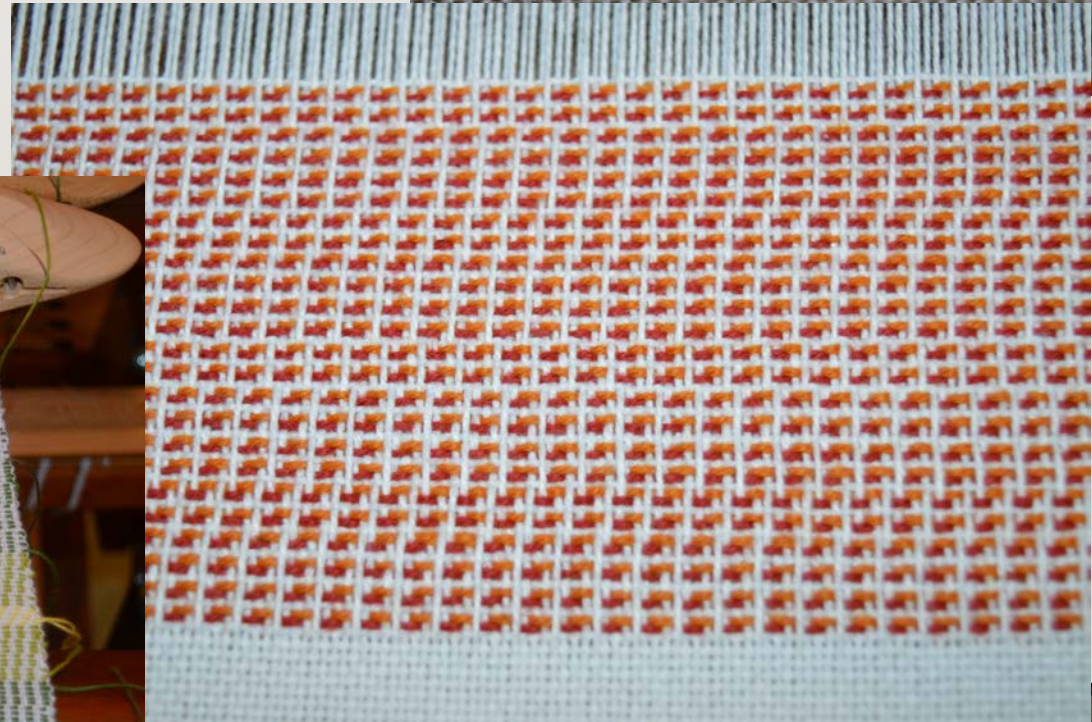
FRONT ↑
SWIVEL
BACK ↓

SPOT

TREADLING VARIATIONS
STRUCTO LOOM
5/2 COTTON WARP
15 EPI
SUSAN MAYO



ECHO TREADLING SAMPLER
STRAIGHT DRAW THREADING
8/2 UNMERCERIZED COTTON WARP/WEIF
24 EPI
DEBBIE CUMMINGS



ECHO SCARF ON 8 SHAFTS
PATTERN BY DENISE KOVNAT
10/2 PERLE COTTON WARP
20/2 PERLE COTTON WEFT
40 EPI
BETH PALMER

